

# Fibergrate® Fiberglass Molded Floor Plate

*Corrosion Resistant*

*Slip Resistant*

*Fire Retardant*

*High Strength-to-Weight Ratio*

*Non-Conductive*

*Impact Resistant*

*Low Installation Cost*

*Long Service Life*

*Superior Ergonomics*

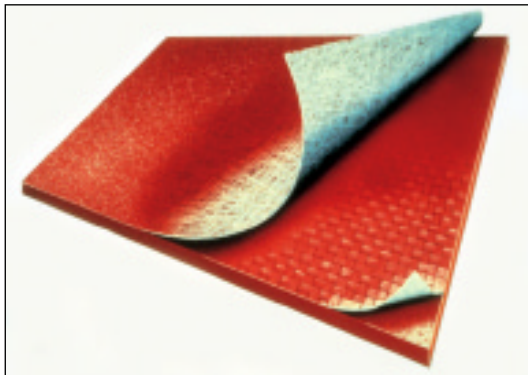
**Fibergrate**  
Composite Structures

*High Performance Composite Solutions*

# Floor Plate

Fiberplate sets the standard for high performance structural floor panels. Fiberplate's rugged fiberglass structural plates are designed for use in applications where durability and long, maintenance-free life are critical. These floor plates are an economical safe solution to slippery walking surfaces. As flooring, Fiberplate's plates are usually installed over existing grating, to provide a solid walkway or to extend the life of a high traffic area. Fiberplate can also be bolted directly to structural beams and used as wall panels that are resistant to corrosive splash when ordered with an ungritted surface.

Along with long life and durability, Chemplate and Fiberplate incorporate a number of safety features. A molded-in, grit-top surface is standard for improved footing. Since these plates are electrically non-conductive,



## Applications

- On metal stairs and work platforms
- Packing plant floors
- Boat decks and stairs
- Over wooden duckboards
- Any solid surface where slips and falls are a hazard

the possibility of workers being injured by electrical shock is virtually eliminated.

These specially designed products are also non porous, eliminating bacterial breeding areas, and are easily cleaned by flushing or steam cleaning. Standard panel sizes are 3' x 10', 4' x 8', 4' x 12' and 5' x 10'.

## Structural Laminate Construction

Chemplate and Fiberplate are manufactured by building up multiple layers of fiberglass reinforcement and specially-formulated resins. The result of this process is a solid composite panel offering both bi-directional strength and corrosion resistance.

## Characteristics

Whether used as flooring or wall panel, Chemplate and Fiberplate exceed the performance requirements of today's toughest industrial and food processing applications. Key characteristics include:

- Unmatched corrosion resistance
- Impact absorption
- Fire retardance and non-conductivity
- Grit-top surface for improved slip resistance
- USDA accepted resins
- Resistance to microbial growth
- Maintenance free; easy-to-clean
- Lowest life cycle cost

## Fiberplate®

In caustic and/or acidic conditions, Fiberplate provides a level of corrosion resistance that is unequaled, even with stainless steel. In addition, the strength of Fiberplate is evidenced by its ability to support heavy loads.

To meet a wide range of needs, Fiberplate is manufactured in thicknesses ranging from 1/8" to 3/4" and is easy to install, with a minimum of material waste.

Fiberplate is available in various resin systems and colors including Corvex®, Vi-Corr® and FGI (USDA accepted). Color options include special shades of blue and green, proven in ergonomic research to increase worker productivity.

## Chemplate®

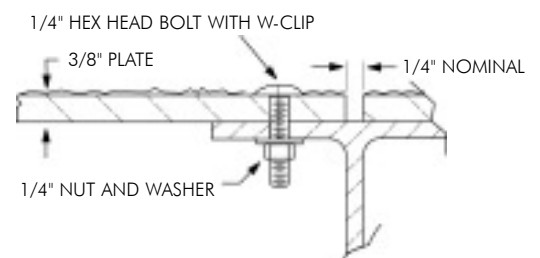
Accepted by the USDA for use in federally inspected food processing facilities, Chemplate CP-84 and FS-25 deliver an impressive range of characteristics which are of particular benefit to the food industry. Worker safety is enhanced by its standard grit-top surface, which provides important slip resistance over metal products such as diamond plate.

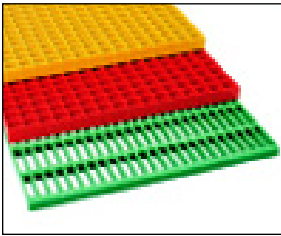
Chemplate is available in three resin systems and a variety of colors. For corrosive environments CP-84 is available in a standard green color. FS-25 offers corrosion resistance plus fire retardancy. The standard color is light gray, but it is also available in green and yellow. VE-25 resin system provides outstanding corrosion-resistance plus fire retardancy and is available in orange or dark gray.



## Installation

- Install using ordinary hand tools and masonry blade
- Fastener assembly kits may be ordered directly from Fibergrate
- Space fasteners a minimum of 12"-24" apart
- Elastomeric caulk may be used in the gap between plates
- On concrete, use masonry bit and concrete anchor bolts
- On steel, wood or FRP, drill and bolt with W-clip assembly
- It is recommended that cut edges and holes be sealed



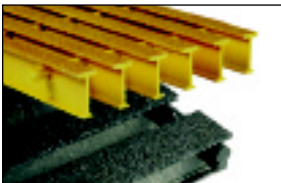
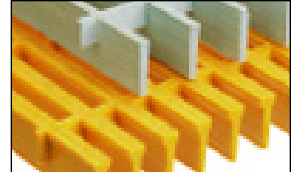


### **Fibergrate® Molded Grating**

Fibergrate molded gratings are designed to provide the ultimate in reliable performance, even in the most demanding conditions. Fibergrate offers the widest selection in the market with ten resins including Chemgrate CP-84 and seventeen grating configurations available in many panel sizes and surfaces.

### **RIGIDEX® Moltruded® Grating**

RIGIDEX Moltruded gratings are the first fiberglass gratings to combine the corrosion resistance of molded grating with the longer span capacity of pultruded grating, all at the low cost of metal gratings.

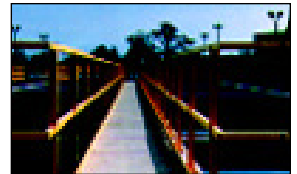


### **Safe-T-Span® Pultruded Industrial and Pedestrian Gratings**

Combining corrosion resistance, long-life and maintenance-free designs, Safe-T-Span provides unidirectional strength for industrial and pedestrian pultruded grating applications.

### **Dynarail® Handrail**

Easily assembled from durable prefabricated components or engineered to your specifications, Dynarail handrail meets or exceeds OSHA and strict building code requirements for safety and design.

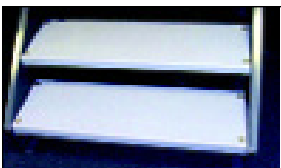
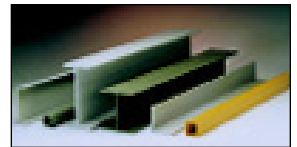


### **Dynarail® Safety Ladder System**

Easily assembled on site, Dynarail safety ladder systems meet or exceed OSHA requirements. Though less costly than prefabricated ladder systems, these safety ladders provide a custom fit to the supporting structure.

### **Dynaform® Structural Shapes**

Fibergrate offers a wide range of pultruded structural components for industrial use, including bars, rods, tubes, beams, channels, leg angles and plates.



### **Stair Solutions**

Fibergrate offers a wide range of slip-resistant products to meet your stair safety issues. These durable products which include treads, tread covers and covered stair treads are a long-term, cost-efficient solution for your facility.

### **Fabrication Services**

Combining engineering expertise with an understanding of fiberglass applications, Fibergrate provides turnkey design and fabrication of fiberglass structures, including platforms, catwalks, stairways and test racks.

